

READ ALL INSTRUCTIONS BEFORE USING THE TOOL

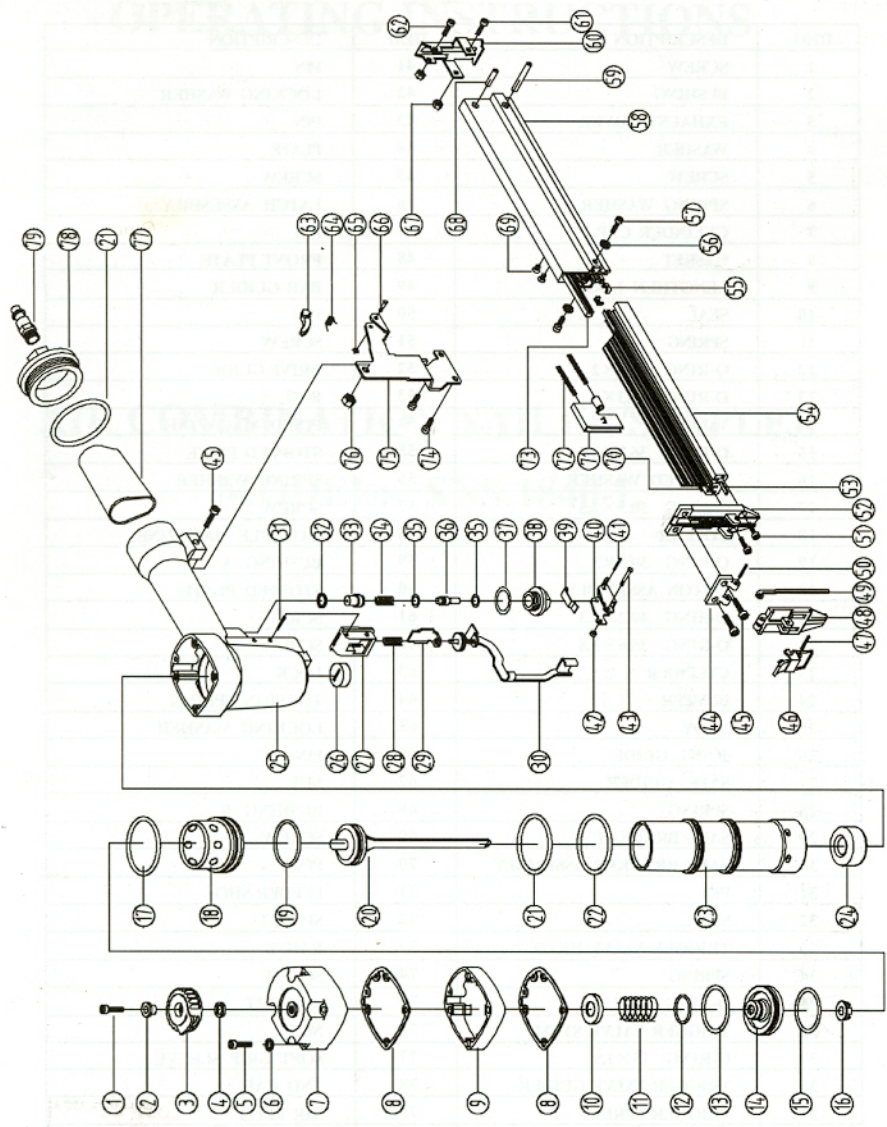
CONTENTS

OPERATING INSTRUCTIONS

AIR COMBINATION NAILER/STAPLER

MODEL: SNS 1840-L

EXPLODED VIEW DRAWING



PARTS LIST

Refer to the Exploded View Drawing for the location of parts listed below

ITEM	DESCRIPTION	ITEM	DESCRIPTION
1	SCREW	41	PIN
2	BUSHING	42	LOCKING WASHER
3	EXHAUST COVER	43	PIN
4	WASHER	44	PLATE
5	SCREW	45	SCREW
6	SPRING WASHER	46	LATCH ASSEMBLY
7	CYLINDER CAP	47	PIN
8	GASKET	48	FRONT PLATE
9	LENGTHEN LOOP	49	BAR GUIDER
10	SEAL	50	PIN
11	SPRING	51	SCREW
12	O-RING 15.7×2	52	DRIVE GUIDE
13	O-RING 38.3×3	53	RAIL A
14	VALVE	54	FIXED MAGAZINE
15	O-RING 36.3×3.5	55	STOPPED PIECE
16	STOPPED WASHER	56	SPRING WASHER
17	O-RING 50.5×2.5	57	SCREW
18	COLLAR	58	MOVABLE MAGAZINE
19	O-RING 30.3×3	59	BUSHING A
20	PISTON ASSEMBLY	60	STOPPED PLATE
21	O-RING 40.2×2.3	61	SCREW
22	O-RING 35.6×1.8	62	SCREW
23	CYLINDER	63	LOCK
24	BUMPER	64	TORSION SPRING
25	BODY	65	LOCKING WASHER
26	JOINT GUIDE	66	PIN
27	SAFE GUIDER	67	NUT
28	SPRING	68	BUSHING B
29	SAFE BRACKET	69	SCREW
30	SAFE BRACKET ASSEMBLY	70	PIN
31	PIN	71	FEEDER SHOE
32	SEAL	72	SPRING
33	TRIGGER VALVE HEAD	73	RAIL B
34	SPRING	74	SCREW
35	O-RING 5.5×1.5	75	SUPPORT
36	TRIGGER VALVE STEM	76	NUT
37	O-RING 15×1.9	77	SOFT GRIP SLEEVE
38	TRIGGER VALVE GUIDER	78	END CAP
39	TRIGGER SPRING	79	AIR PLUG
40	TRIGGER		